



**transport**

---

Department:  
Transport

**PROVINCE OF KWAZULU-NATAL**

**BRIEFING NOTES FOR THE REGRAVELLING OF D2344  
FROM (KM 0+000 – KM 4.538) AND L815 (KM 0+000 TO  
1+95)**



**transport**

Department:  
Transport  
PROVINCE OF KWAZULU-NATAL

**TENDER NUMBER: CONTRACT NO. ZNB00540/00000/00/PMC/INF/21T:  
REGRAVELLING OF D2344 (KM 0+000 – KM 4+538) AND L815 (KM 0+000 TO 1+950) IN THE VULINDLELA AREA  
OFFICE**

**Tender documents are available at no cost in electronic format downloadable from KZN  
Department of Transport website [www.kzntransport.gov.za](http://www.kzntransport.gov.za)**



**transport**

Department:  
Transport

PROVINCE OF KWAZULU-NATAL

# WELCOME & INTRODUCTION



**transport**

Department:  
Transport  
PROVINCE OF KWAZULU-NATAL

## ENQUIRES

Queries relating to issues arising from these documents may be addressed to the following:

ALL ENQUIRIES				
	<b>Project</b>	<b>Contact Person</b>	<b>Email Address</b>	<b>Telephone</b>
Technical	D2344 & L815	<b>Mr. B.M Ngcobo</b>	<a href="mailto:Bryan.Ngcobo@kzntransport.gov.za">Bryan.Ngcobo@kzntransport.gov.za</a>	<b>+27 33 940 4800</b>
SCM		<b>Thembelihle Dlomo</b>	<a href="mailto:Thembelihle.Dlomo@kzntransport.gov.za">Thembelihle.Dlomo@kzntransport.gov.za</a>	<b>+27 33 392 6600</b>



**transport**

Department:  
Transport  
PROVINCE OF KWAZULU-NATAL

## IMPORTANT DATES

TENDER CLOSING DATE

**11H00 ON TUASDAY, 06 July 2021**



**transport**

Department:  
Transport  
PROVINCE OF KWAZULU-NATAL

# Overview

## TENDER SECTION

PART T1: TENDERING PROCEDURES

PART T2: RETURNABLE DOCUMENTS

## CONTRACT SECTION

PART C1: AGREEMENTS AND CONTRACT DATA

PART C2: PRICING DATA

PART C3: SCOPE OF WORKS

PART C4: SITE INFORMATION



**transport**

Department:  
Transport

PROVINCE OF KWAZULU-NATAL

# PART T1: TENDERING PROCEDURES



transport

Department:  
Transport  
PROVINCE OF KWAZULU-NATAL

## T1.1: TENDER NOTICE AND INVITAION TO TENDER

**CONTRACT NO. ZNB00540/00000/00/PMC/INF/21/T: REGRAVELLING OF D2344 (KM 0+00 TO KM 4+538) and L815 (KM 0+00 TO KM 1+95) IN THE MSUNDUZI LOCAL MUNICIPALITY (KZ225), COST CENTRE PIETERMARITZBURG**

The Province of KwaZulu-Natal, Department of Transport, invites tenders from contractors, experienced in roadworks, for the **REGRAVELLING OF D2344 (KM 0+00 TO KM 4+538) and L815 (KM 0+00 TO KM 1+95) IN THE MSUNDUZI LOCAL MUNICIPALITY (KZ225), COST CENTRE PIETERMARITZBURG**. This project is in the province of KwaZulu-Natal in the district municipality of uMgungundlovu and local municipality of Msunduzi. The duration of the project is 4 months.

Only tenderers that satisfy the eligibility criteria stipulated in clause C.2.1 of the Tender Data are eligible to have their tenders considered.

It is estimated that tenderers must have a CIDB contractor grading designation **3CE** or higher.

Document will be made available on [www.etenders.treasury.gov.za](http://www.etenders.treasury.gov.za). Documents will be available from 08 June 2021.

There will be NO Tender Briefing for this tender but briefing notes will be available for downloading with the tender document to aid tenderers in completing the documents

Technical Queries relating to this Tender may be addressed to:

Mr B.M. Ngcobo on telephone no. 033 940 4800 or e-mail address: [Bryan.Ngcobo@kzntransport.gov.za](mailto:Bryan.Ngcobo@kzntransport.gov.za)

The closing time for receipt of Tender is 11:00 on Tuesday 6 July 2021. Telegraphic, telephonic, telex, facsimile, electronic, e-mail and late Tenders will not be accepted.

Electronic scanned copies of the submitted tenders must be emailed to [tenders.pmbregion@kzntransport.gov.za](mailto:tenders.pmbregion@kzntransport.gov.za) on the same date of closing of the tender.

Requirements for sealing, addressing, delivery, opening and assessment of tenders are stated in the Tenders Data

Refer to  
pg. T4





**transport**

Department:  
Transport

PROVINCE OF KWAZULU-NATAL

# TENDERING PROCEDURES

## T1.2: TENDER DATA



**transport**

Department:  
Transport

PROVINCE OF KWAZULU-NATAL

## CONDITIONS OF TENDER

The conditions of tender are the standard conditions of tender contained in Annex C of the Construction Industry Development Board Standard for Uniformity in Engineering and Construction Works Contracts, published in Government Gazette No. 42622 dated 8 August 2019.



**transport**

Department:  
Transport  
PROVINCE OF KWAZULU-NATAL

## TENDER DATA

The standard conditions of tender make several references to the tender data for details that apply specifically to this tender. The tender data shall have precedence in the interpretation of any ambiguity or inconsistency between the tender data and the standard conditions of tender.

CLAUSE NUMBER	TENDER DATA
	<p>The Employer is The KZN Department of Transport:</p> <p><b>The Employer's address for communication relating to this project is:</b></p> <p>Pietermaritzburg Regional Office 1 Woodlands road Pietermaritzburg 3200</p>



**transport**

Department:  
Transport  
PROVINCE OF KWAZULU-NATAL

## TENDER DATA

CLAUSE NUMBER	TENDER DATA
C2.1	<p>Only those tenderers who satisfy the following criteria are eligible to submit tenders.</p> <ul style="list-style-type: none"><li>a) Contractor grading designation equal to or higher than a 3 for a CE</li><li>b) Registered on the Central Supplier Database</li></ul>



**transport**

Department:  
Transport  
PROVINCE OF KWAZULU-NATAL

#### TENDER DATA

C.2.13	Tender offers shall be submitted as an original hard copy on No <b>1 Woodlands road, Pietermaritzburg, 3201</b> and <b>copies of the submitted tender must be emailed to <a href="mailto:pmbtenders@kzntransport.gov.za">pmbtenders@kzntransport.gov.za</a></b>
C.2.15	The closing time for submission of Tender Offers is: <b>11:00 on Tuesday 06 July 2021</b>



**transport**

Department:  
Transport  
PROVINCE OF KWAZULU-NATAL

## TENDER DATA

CLAUSE NUMBER	TENDER DATA
C2.16	The tender offer validity period is <b>12 weeks</b> from the closing date/ time for submission of tenders.



**transport**

Department:  
Transport  
PROVINCE OF KWAZULU-NATAL

## TENDER DATA

CLAUSE NUMBER	TENDER DATA
C3.4	<p><b>Tender Opening</b></p> <p>The time and location for opening of the tender submissions are:</p> <p>Time: <b>11H00</b> Date: <b>Tuesday, 06 July 2021</b></p> <p>Location / Venue: KZN Department of Transport, The Regional Office Foyer, No 1 Woodlands road, Pietermaritzburg.</p>



**transport**

Department:  
Transport  
PROVINCE OF KWAZULU-NATAL

## TENDER DATA

CLAUSE NUMBER	TENDER DATA
C.3.13	<p>(e) The legal requirements for acceptance of the tender offer are:</p> <p>(i) The Tenderer or any of its principals is not listed on the register of Tender Defaulters in terms of the Prevention and Combating of Corrupt Activities Act of 2004 as a person prohibited from doing business with the public sector.</p> <p>(ii) the Tenderer has not abused the Employer's Supply Chain Management System.</p> <p>(iii) The Tenderer has indicated and declared whether a spouse, child or parent of the Tenderer is in the service of the State.</p> <p>(iv) The Employer is satisfied that the Tenderer or any of his principals have not influenced the tender offer and acceptance</p>





**transport**

Department:  
Transport  
PROVINCE OF KWAZULU-NATAL

## **PART T2: RETURNABLE DOCUMENTS**

- (a) Returnable Schedules in T2.2.
- (b) C1.1 Form of Offer and Acceptance, C1.1.1: Offer, on page C3.
- (c) Contract Specific Data Provided by the Contractor in C1.2.3.
- (d) Pricing Data in C2.2: Bill of Quantities.



**transport**

Department:  
Transport  
PROVINCE OF KWAZULU-NATAL

## T2.2 : RETURNABLE SCHEDULES

### Notes to tenderer:

1. **Returnable schedules have been based on the CIDB Standard for Uniformity in Construction Procurement and incorporates National Treasury requirements within them(SBD Forms.** Returnable schedules are separated into the following categories:
  - i) Forms, certificates and schedules for completion by the tenderer for use in the quantitative and qualitative **evaluation of the tender** C1.1 Form of Offer and Acceptance, C1.1.1: Offer, on page C3.
  - ii) A list of other returnable documents for completion by the tenderer and which will subsequently be **incorporated into the contract**
2. Failure to fully complete the relevant returnable documents shall render such a tender offer to be **declared non-responsive.** SBD forms with a water mark not applicable should be ignored
3. Tenderers shall note that their signatures appended to each returnable form represents a declaration that they **vouch for the accuracy and correctness of the information provided**, including the information provided by candidates proposed for the specified key positions.
4. Notwithstanding any check or audit conducted by or on behalf of the Employer, the information provided in the returnable documents is accepted in good faith and as justification for entering into a contract with a tenderer. If subsequently any information is found to be incorrect such discovery shall be taken as wilful misrepresentation by that tenderer to induce the contract.



**transport**

Department:  
Transport  
PROVINCE OF KWAZULU-NATAL

**RETURNABLE  
SCHEDULES**

A	RECORD OF ADDENDA TO TENDER DOCUMENTS.....	T13
B	COMPULSORY ENTERPRISE QUESTIONNAIRE.....	T14
C	STANDARD BIDDING DOCUMENTS .....	T15
	SBD 1: INVITATION TO BID.....	T15
	SBD 4: DECLARATION OF INTEREST .....	T17
	SBD 6.1: PREFERENCE POINTS CLAIM FORM IN TERMS OF THE PREFERENTIAL PROCUREMENT REGULATIONS 2017 .....	T21
	SBD 6.2: DECLARATION CERTIFICATE FOR LOCAL PRODUCTION AND CONTENT FOR DESIGNATED SECTORS .....	T25
	SBD 8: DECLARATION OF BIDDER'S PAST SUPPLY CHAIN MANAGEMENT PRACTICES.....	T32
	SBD 9: CERTIFICATE OF INDEPENDENT BID DETERMINATION .....	T34
D	B-BBEE STATUS LEVEL VERIFICATION CERTIFICATE.....	T36
E	CERTIFICATE OF AUTHORITY FOR SIGNATORY.....	T37
F	CONSTRUCTION EXPERIENCE .....	T38
G	KEY PERSONNEL.....	T39
H	CONSTRUCTION EQUIPMENT.....	T42
I	PROPOSED SUBCONTRACTORS.....	T43
J	PARTICIPATION IN JOB CREATION USING LOCAL LABOUR .....	T44
K	HEALTH AND SAFETY DECLARATION.....	T46
L	DEVIATIONS AND QUALIFICATIONS.....	T48
M	SCHEDULE OF ALTERNATIVE TENDERS.....	T49

NOTE: The Tenderer is required to complete each schedule and form listed above to the best of his ability as the evaluation of tenders and the eventual contract will be based on the information provided by the Tenderer. Failure of a Tenderer to complete the schedules and forms to the satisfaction of the Employer may lead to rejection on the grounds that the tender is non-responsive.



**transport**

Department:  
Transport

PROVINCE OF KWAZULU-NATAL

# **PART C1: AGREEMENTS AND CONTRACT DATA**



**transport**

Department:  
Transport  
PROVINCE OF KWAZULU-NATAL

## PART C1: AGREEMENTS & CONTRACT DATA

### C1.1.1 Form of Offer

- Ensure that **amount in words** corresponds with **amount in figures** on the Pricing Schedule
- Ensure that Form of Offer is signed by **authorised person** and **one witness**.

Refer to pg.  
C3 – C6

### C1.1.2 Form of Acceptance

- Ensure that Form of Acceptance is signed by **authorised person** and **one witness**.
- Ensure that Schedules of Deviations is fully completed, signed by **authorised person** and **one witness**



transport

Department:  
Transport  
PROVINCE OF KWAZULU-NATAL

### C.1.3.1 CONTRACT DATA: INFORMATION PROVIDED BY THE EMPLOYER

Clause	Contract Data			
SCC1.1.1.14	The time for achieving Practical Completion is 6 months from the date of commencement of the Works, including non-working days and special non-working days.			
1.2.1.2	<p><b>Address of Employer:</b></p> <table border="0"> <tr> <td data-bbox="470 751 1037 932">           Physical:            NO. 1 CEDARA ROAD            Merrivale, Howick            32913200         </td> <td data-bbox="1079 751 1829 932">           Postal:            Private Bag X 03            Pietermaritzburg         </td> </tr> </table>		Physical: NO. 1 CEDARA ROAD Merrivale, Howick 32913200	Postal: Private Bag X 03 Pietermaritzburg
Physical: NO. 1 CEDARA ROAD Merrivale, Howick 32913200	Postal: Private Bag X 03 Pietermaritzburg			
SCC 4.1.1	The contract participation goal for local labour content is 6%.			
SCC 5.3.1 and 5.3.2	The date of commencement of the Works shall be within 28 days, after the Commencement Date.			
5.13.1	The penalty for failing to complete the Works is 0,05% of the Contract Sum per day.			



**transport**

Department:  
Transport  
PROVINCE OF KWAZULU-NATAL

### C.1.3.2 CONTRACT DATA: INFORMATION PROVIDED BY THE CONSULTANT

Clause	Contract Data
5.14.1	The requirements for achieving Practical Completion are as stated in General Conditions of Contract 2015.
SCC 6.2.1	The security to be provided by the Contractor shall be: <b>Fixed Performance Guarantee of 8% of the first One Million Rand plus 3,5% of the balance of the Contract Sum.</b>
6.10.3	The percentage retention on the amounts due to the Contractor is 10%.
8.6.1.3	The limit of indemnity for liability insurance is <b>R2 000 000,00</b> (Two million Rand only) for any single liability claim for projects with a duration shorter than 6 month and a project value less than R 5 000 000.00 (Five million Rand only).



**transport**

Department:  
Transport  
PROVINCE OF KWAZULU-NATAL

### C.1.3.2 CONTRACT DATA: INFORMATION PROVIDED BY THE CONSULTANT

Clause	Contract Data
<b>10.</b>	<b>CLAIMS AND DISPUTES</b>
10.5.2	Disputes shall be referred to ad-hoc adjudication.
10.5.3	The number of Adjudication Board members to be appointed shall be one.
10.8.1	Unresolved disputes shall be determined by court proceedings.





**transport**

Department:  
Transport

PROVINCE OF KWAZULU-NATAL

# PART C2: PRICING DATA



**transport**

Department:  
Transport  
PROVINCE OF KWAZULU-NATAL

## C2.2 : BILL OF QUANTITIES

Refer to pg.  
C28– C38

**refer to Schedule A:  
Roadworks**



**transport**

Department:  
Transport

PROVINCE OF KWAZULU-NATAL

# PART C3: SCOPE OF WORKS



**transport**

Department:  
Transport  
PROVINCE OF KWAZULU-NATAL

## C3 SCOPE OF WORKS

Refer to pg. C39

- This section covers matters that relate to the project as a whole. Matters covered by the General and/or Particular Conditions of Contract are not repeated in this section, except to provide more detailed information



**transport**

Department:  
Transport  
PROVINCE OF KWAZULU-NATAL

## C3.1 STANDARD SPECIFICATIONS

Refer to pg. C40

The Standard Specifications on which this contract is based are the '**Standard Specifications for Road and Bridge Works for South African Road Authorities (COTO), Draft Standard (DS), October 2020**'.



**transport**

Department:  
Transport  
PROVINCE OF KWAZULU-NATAL

## C3.2 PROJECT SPECIFICATIONS

### PART A: GENERAL

#### 1.1 Employer's objectives

#### 1. DESCRIPTION OF THE WORKS

The objective of the project is to Re-gravel D2344 from km 0+000 to km 4+538 and L815 km 0+000 to 1+950. There is no gravel left on the current surface and is slippery when it rains the road requires a new gravel surface layer to be placed.

Refer to  
pg. C41



## transport

Department:  
Transport  
PROVINCE OF KWAZULU-NATAL





**transport**

Department:  
Transport  
PROVINCE OF KWAZULU-NATAL







**transport**

Department:  
Transport  
PROVINCE OF KWAZULU-NATAL

## C3.2 PROJECT SPECIFICATIONS

### PART A: GENERAL

#### 1.2 Location of the Works

Main Road D2344 is located in KZ 225 within DC 22, where the start of the project is at intersection of P7/2 and D2344 in Taylors Halt area under Msunduzi Municipality.

Refer to  
pg. C41



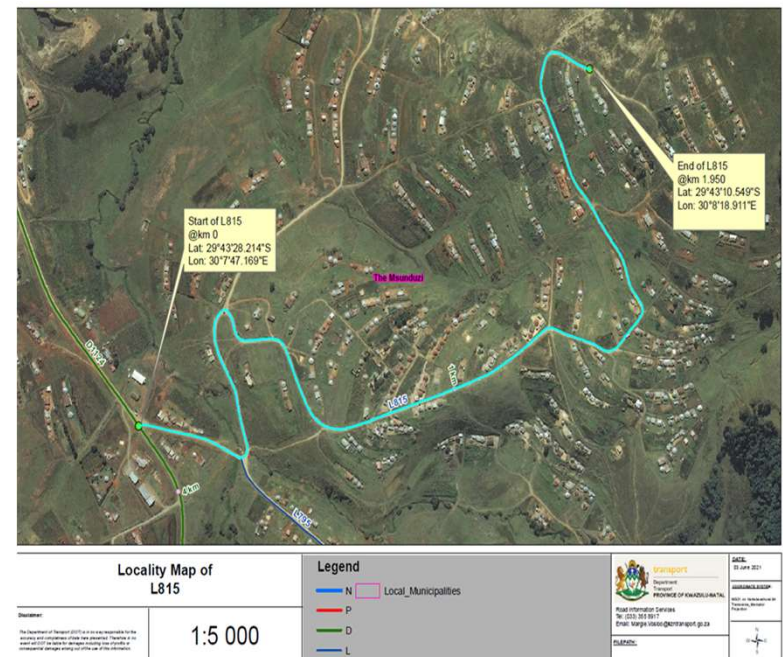
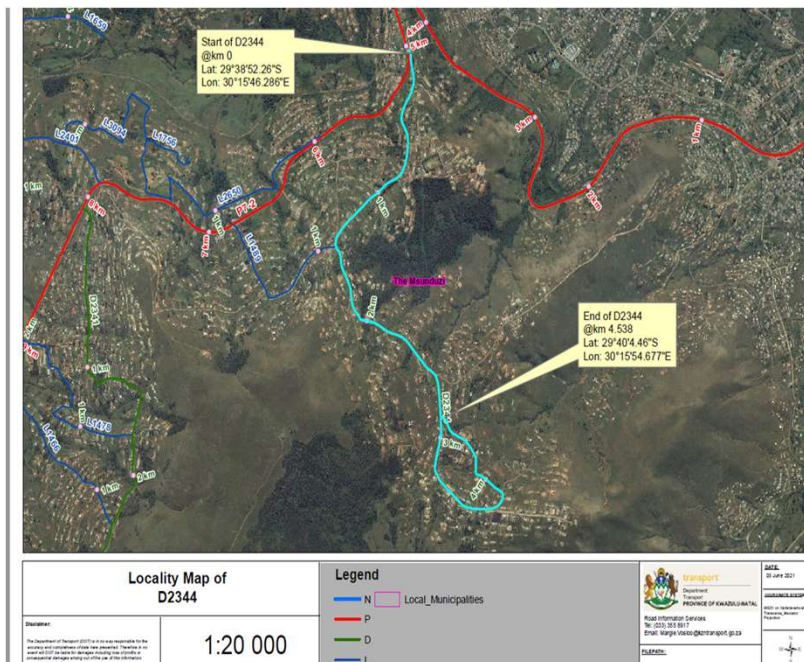
**transport**

Department:  
Transport  
PROVINCE OF KWAZULU-NATAL

## C3.2 PROJECT SPECIFICATIONS

### PART A: GENERAL

#### 1.2 Location of the Works .....





**transport**

Department:  
Transport  
PROVINCE OF KWAZULU-NATAL

## C3.2 PROJECT SPECIFICATIONS

### PART A: GENERAL

#### 1.3 Overview of the Works

The Work to be carried out includes the following:

- Establishment and De-establishment
- Provision of traffic accommodation facilities,
- Installation of Prefabricated Culverts,
- Roadbed preparation,
- Dumping of gravel material,
- Pavement layers of 150 mm gravel compacted 95 % mod AASH
- Continuous quality control over materials and workmanship, and compliance with the Particular Specifications with regard to environmental management and occupational health and safety, during all the above construction activities,
- Clearing of road reserve
- Finishing and tidying of the road and road reserve

Refer to  
pg. C43



**transport**

Department:  
Transport  
PROVINCE OF KWAZULU-NATAL

## C3.2 PROJECT SPECIFICATIONS

### PART A: GENERAL

#### 1.4 Extent of the Works

A brief detail of the works for which this specification is applicable is as follows:  
Roadworks

(a) The design pavement structure is summarized in the following tables:-

Layer	Thickness (mm)	TRH 14 Code	Description	Compaction (%)
Gravel Wearing Course	150	-	Gravel selected from road prism or local borrow pits	95% Mod AASHTO

Refer to  
pg. C42



**transport**

Department:  
Transport  
PROVINCE OF KWAZULU-NATAL

## C3.2 PROJECT SPECIFICATIONS.....

### PART A: GENERAL

#### 1.4 Extent of the Works

##### (b) Material sources and quantities

Refer to  
pg. C42

Description	Source	Approximate quantity
Gravel Wearing Course 1 x 150mm	Gravel selected from road prism or local borrow pits	5546.7 m <sup>3</sup>



**transport**

Department:  
Transport  
PROVINCE OF KWAZULU-NATAL

## C3.2 PROJECT SPECIFICATIONS

### PART A: GENERAL

#### 1.5.1 Access to the Site

Access to the site can be obtained from P7/2 in the Msunduzi Local Municipality (KZ225). Throughout the duration of the contract, Roads shall be shared with other contractors engaged by the KwaZulu-Natal Department of Transport on the identified projects whose construction activities may affect access from time to time. The Contractor shall therefore be required to liaise on an ongoing basis with these other contractors with respect to access related matters throughout the duration of the contract.

Refer to  
pg. C42



**transport**

Department:  
Transport  
PROVINCE OF KWAZULU-NATAL

## C3.2 PROJECT SPECIFICATIONS

### PART A: GENERAL

#### **1.5.6 Material sources, spoil and stockpile areas**

The Borrow pit for D2344 & L815 is located on L754 at the end. The borrow pit is 18.269 km away from D2344 and 14.975km from L815

Refer to  
pg. C43



**transport**

Department:  
Transport  
PROVINCE OF KWAZULU-NATAL

## C3.2 PROJECT SPECIFICATIONS

### PART A: GENERAL

#### 1.7 Testing of materials

The Contractor shall arrange for all tests required for process control to be done by a laboratory acceptable to and approved by the Engineer.

Laboratory must operate under the auspices of a SANAS accreditation and with the necessary quality assurance plans.

Refer to  
pg. C44





**transport**

Department:  
Transport  
PROVINCE OF KWAZULU-NATAL

## C3.2 PROJECT SPECIFICATIONS

### PART A: GENERAL

#### 1.10 Contractor's campsite (Project Specific) f materials

The Contractor shall make his own arrangements for the provision of his campsite and housing for construction personnel but the chosen site shall be subject to the approval of the Employer's Agent and the local authorities.

The standard of the Contractor's camp, offices, accommodation, ablution, and other facilities must comply with the requirements of all local authority, environmental and industrial regulations concerned. In establishing and maintaining his campsite, due cognisance is to be taken of the requirements of clause A1.3.3 of the Standard Specifications for Road and Bridge Works for South African Road Authorities (COTO), Draft Standard (DS), October 2020.

Refer to  
pg. C45



**transport**

Department:  
Transport  
PROVINCE OF KWAZULU-NATAL

## C3.2 PROJECT SPECIFICATIONS

### PART A: GENERAL

#### 1.12 Construction programme

The Contractor shall submit a detailed time programme in accordance with clause 5.6.2 of the General Conditions of Contract 2015, clause A1.2.7 of the Standard Specifications for Road and Bridge Works for South African Road Authorities (COTO), Draft Standard (DS), October 2020.

Refer to  
pg. C45



**transport**

Department:  
Transport  
PROVINCE OF KWAZULU-NATAL

## C3.2 PROJECT SPECIFICATIONS

### PART A: GENERAL

#### 5.7 Daily records

A site diary is to be compiled jointly by the Construction Manager and the Employer's Agent's Representatives on site and is to be agreed and signed by both parties. The original signed copy is to be retained by the Employer's Agent's Representative.

The Contractor is to keep daily records of people and equipment on site in a format to be agreed by the Employer's Agent's Representative, and is to provide copies to the Employer's Agent's Representative when requested.

Refer to  
pg. C53



**transport**

Department:  
Transport  
PROVINCE OF KWAZULU-NATAL

## C3.2 PROJECT SPECIFICATIONS

### PART A: GENERAL

#### 5.8 Payment certificates

Details of measurements, proof of payment for items contained in provisional sums and prime cost sums, proof of ownership of Plant and materials on site and documentation pertaining to contract price adjustment and special materials, are required as substantiation of claims for payment.

Refer to  
pg. C53



**transport**

Department:  
Transport  
PROVINCE OF KWAZULU-NATAL

## C3.2 PROJECT SPECIFICATIONS.....

### PART A: GENERAL

#### **5.11 Submission of reports**

Refer to  
pg. C51

The contractor shall submit monthly reports in accordance with the specifications in Part E:  
Expanded Public Works Programme



**transport**

Department:  
Transport  
PROVINCE OF KWAZULU-NATAL

## PART C4: SITE INFORMATION

**Main Road D2344 and L815** is located in the Taylors area under Msunduzi Municipality and within the UMgungundlovu District Municipality. D2344 is 4.538 kilometres in length and is a gravel surface and L815 is 1.95km.

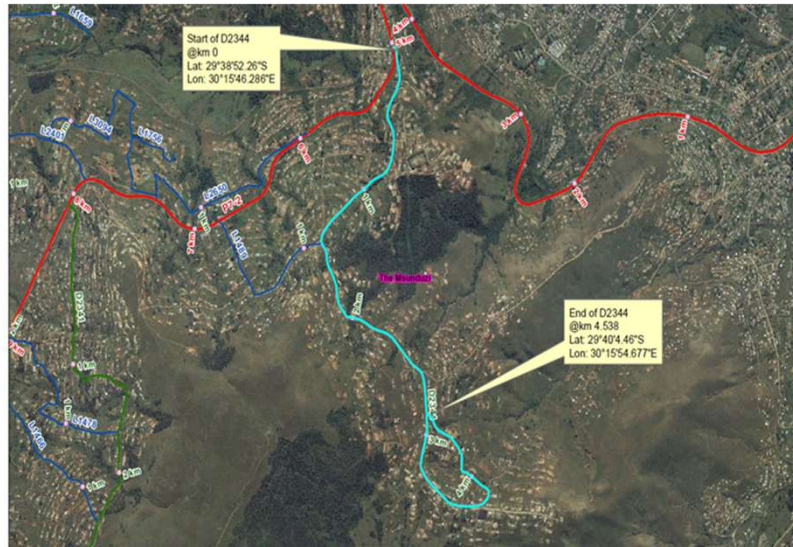
POSITION	LAN	LON
D2344 START KM 0	29°38'52.26"S	30°15'46.286"E
D2344 END KM 4.538	29°40'4.46"S	30°15'54.677"E
L815 START KM 0	29°43'28.214"S	30°7'47.169"E
L815 END KM 1.95	29°43'10.549"S	30°18'8.911"S



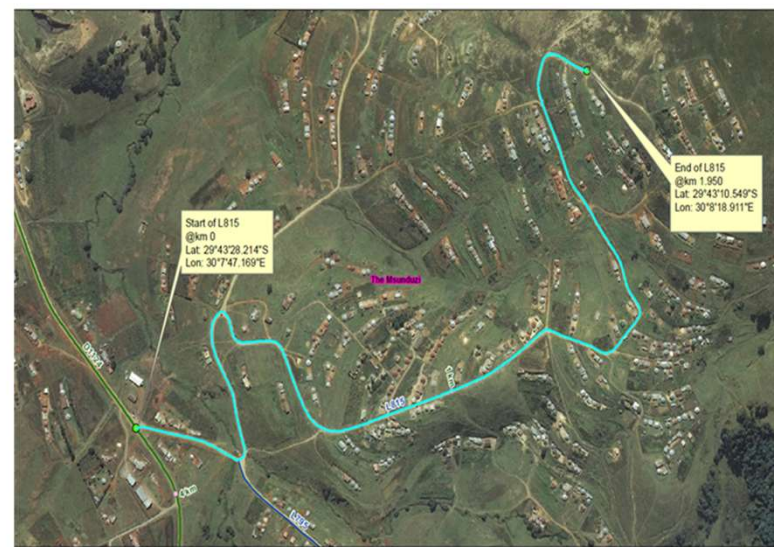
**transport**

Department:  
Transport  
PROVINCE OF KWAZULU-NATAL

## Coordinates



<p><b>Locality Map of D2344</b></p>		<p><b>Legend</b></p> <ul style="list-style-type: none"> <li><span style="color: blue;">—</span> N Local_Municipalities</li> <li><span style="color: red;">—</span> P</li> <li><span style="color: green;">—</span> D</li> <li><span style="color: blue;">—</span> L</li> </ul>	<p>Department of Transport PROVINCE OF KWAZULU-NATAL</p> <p>Road Information Services Tel: 033 301 8977 Email: <a href="mailto:vaags@transport.gov.za">vaags@transport.gov.za</a></p> <p>SCALE: 1:20 000</p>
-------------------------------------	--	--	--



<p><b>Locality Map of L815</b></p>		<p><b>Legend</b></p> <ul style="list-style-type: none"> <li><span style="color: blue;">—</span> N Local_Municipalities</li> <li><span style="color: red;">—</span> P</li> <li><span style="color: green;">—</span> D</li> <li><span style="color: blue;">—</span> L</li> </ul>	<p>Department of Transport PROVINCE OF KWAZULU-NATAL</p> <p>Road Information Services Tel: 033 301 8977 Email: <a href="mailto:vaags@transport.gov.za">vaags@transport.gov.za</a></p> <p>SCALE: 1:5 000</p>
------------------------------------	--	--	---



**transport**

Department:  
Transport  
PROVINCE OF KWAZULU-NATAL

**END/ THANK  
YOU**

**GROWING  
KWAZULU-NATAL  
TOGETHER**